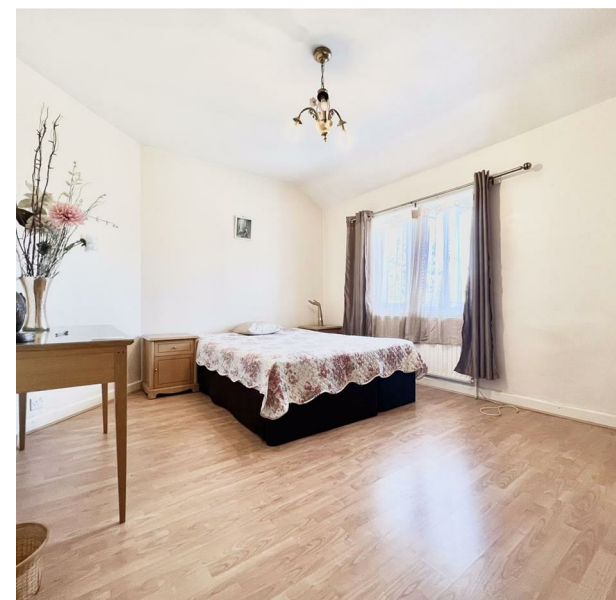


220 South Countess, London, Greater London, E17 5JT  
£2,350 Per Month

COMPLETION  
SALES & LETTINGS





220 South Countess, London, Greater London, E17 5JT

£2,350 Per Month

Council Tax Band: C

Nestled in the vibrant area of Walthamstow, this charming Victorian terraced house on South Countess Road is now available to let for £2,350 per calendar month. This delightful property boasts three well-proportioned bedrooms, making it an ideal home for families or professionals seeking ample living space.

Upon entering, you are welcomed into a spacious reception room that exudes character and warmth, perfect for both relaxation and entertaining guests. The house features a thoughtfully designed layout that maximises natural light, creating a bright and inviting atmosphere throughout.

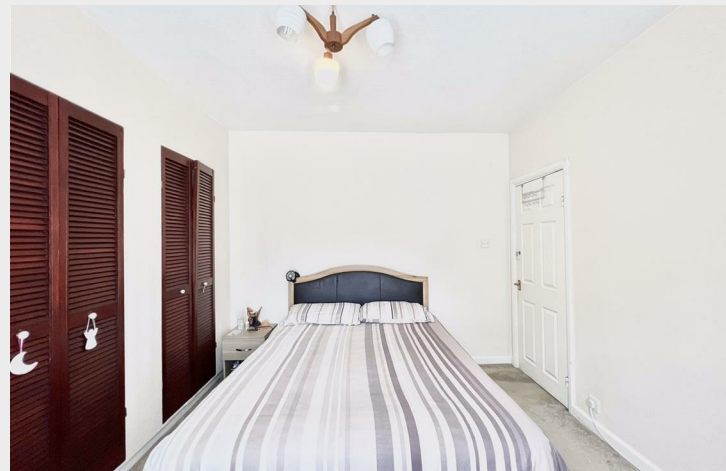
The property includes a modern bathroom, ensuring convenience and comfort for all residents. The kitchen, while not specified, typically offers a functional space for culinary pursuits, allowing for the preparation of delightful meals.



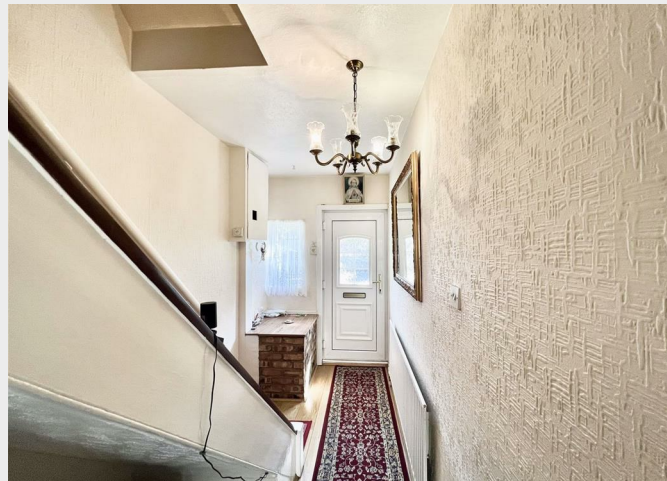
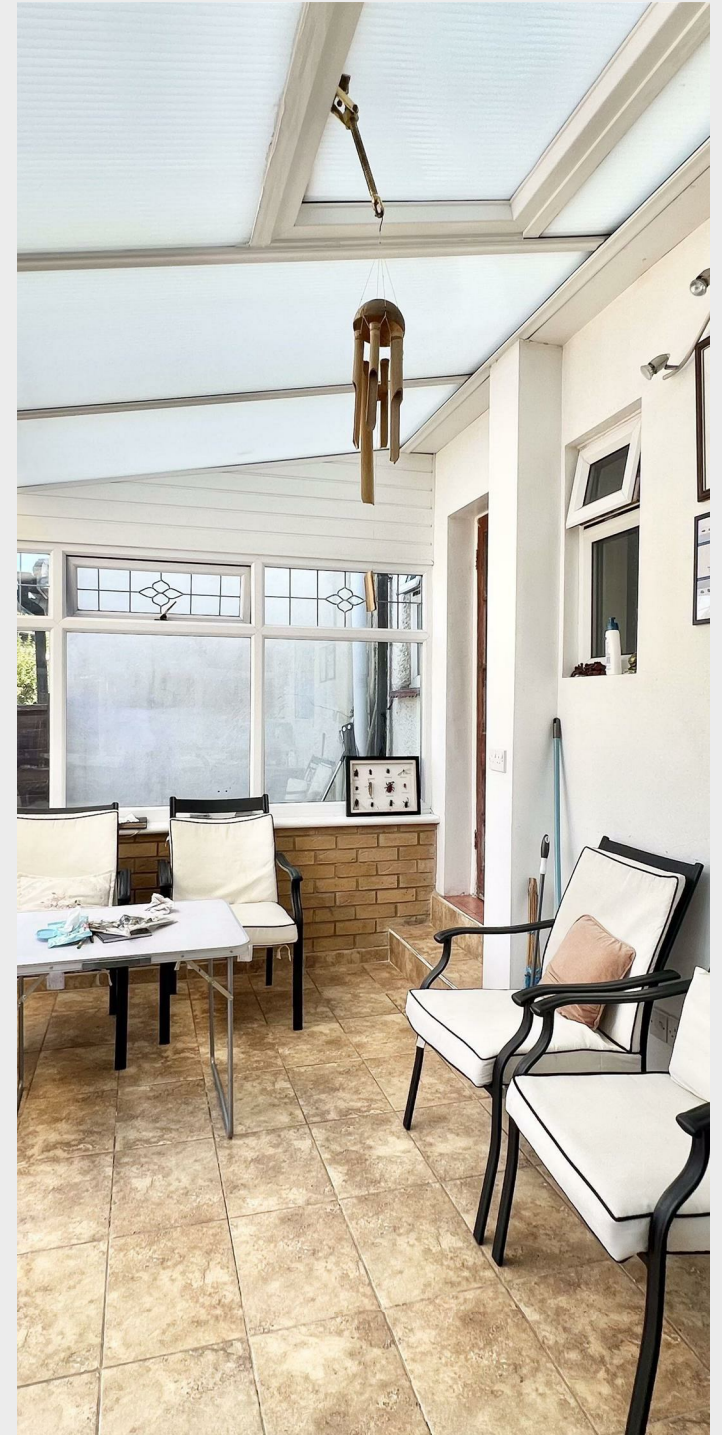






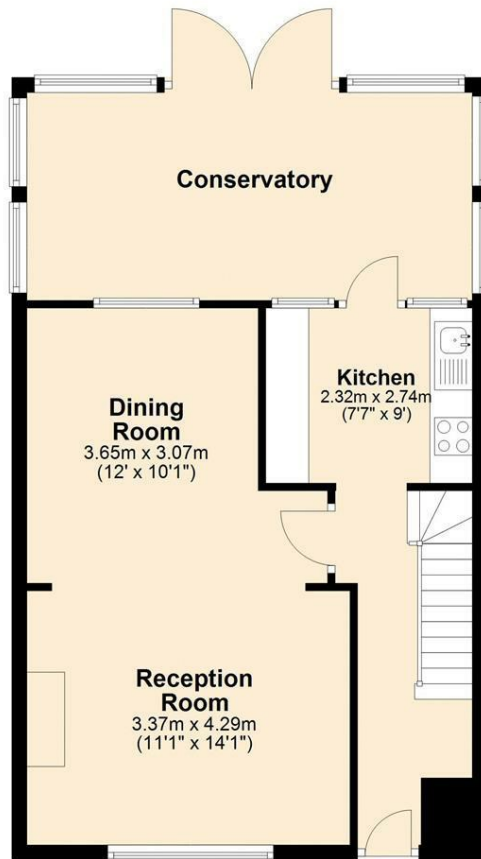






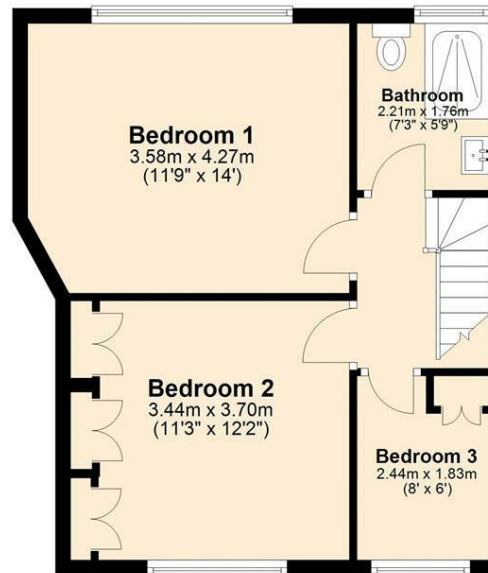
### Ground Floor

Approx. 58.9 sq. metres (634.0 sq. feet)



### First Floor

Approx. 41.4 sq. metres (446.1 sq. feet)



Total area: approx. 100.3 sq. metres (1080.1 sq. feet)

337 Forest Road

London

E17 5JR

02085277007

enquiries@completion.co.uk

completion.co.uk

| Energy Efficiency Rating                    |           |                         |
|---|-----------|-------------------------|
|   | Current   | Potential               |
| Very energy efficient - lower running costs |           |                         |
| (92 plus) <b>A</b>                          |           | <b>88</b>               |
| (81-91) <b>B</b>                            |           |                         |
| (69-80) <b>C</b>                            |           |                         |
| (55-68) <b>D</b>                            | <b>66</b> |                         |
| (39-54) <b>E</b>                            |           |                         |
| (21-38) <b>F</b>                            |           |                         |
| (1-20) <b>G</b>                             |           |                         |
| Not energy efficient - higher running costs |           |                         |
| England & Wales                             |           | EU Directive 2002/91/EC |